



SHREWSBURY TOWN GUIDE 2024

FREE



"4 star luxury in the very heart of Shrewsbury"

Following a significant £1 million renovation programme and the addition of a 4th AA star, the first of its kind within the town centre, the Grade II Listed Prince Rupert is now firmly established as the finest hotel within the heart of Shrewsbury. Just a stone's throw away from all of Shrewsbury's best attractions, the hotel is located within the town's most fashionable and cosmopolitan area on Butcher Row.



Family owned & managed since 1996

70 bedrooms including 12th & 15th Century historic suites
2 superb restaurants, Camellias Tea rooms & an Award-winning Executive Head Chef
Valet parking to our private town centre car park

Butcher Row, Shrewsbury, SY1 1UQ | Tel: 01743 499 955
reservations@princeruprthotel.co.uk | www.princeruprthotel.co.uk



HENRY TUDOR INN



Tarry & Dine
SHREWSBURY'S
ONLY GRADE 1
LISTED PUB

Barracks Passage, Wyle Cop, Shrewsbury SY1 1XA

01743 361 666

henrytudorinn.com



VISIT SHROPSHIRE

WELCOME TO SHREWSBURY

FOR HISTORY, FOR LEISURE,
ALWAYS FOR PLEASURE!

Welcome to our little paradise in the loop of the River Severn.

Shrewsbury is small enough to explore on foot but big enough to give you plenty to discover and keep you busy for a whole weekend - or make a week of it visiting wider Shropshire.

We're a bustling town, full of creatives and big ideas, independent shops and entrepreneurial spirit. It's a town of contrasts, with the sweeping green spaces of The Quarry park and riverside and higgledy-piggledy, half-timbered streets within the town walls.

If history is your thing, you've come to the right place. We've over 700 listed buildings - all with stories to tell. You'll love our mediaeval shuts and passages which criss-cross the town and our wonky black and white buildings - there's a picture opportunity round every corner!

There's always something going on in Shrewsbury, from artisan markets and food fairs to pop ups in cool spaces and of course our famous festivals and River Severn loop to enjoy.



Arrive	5
Discover	6
Explore	9
Drink & Dine	15
Map	20
Shop Local	24
Experience	29
Children & Families	31
Events	32
Roam	34
Stay	36



Shrewsbury Visitor Information Centre

For hints and tips about what to see and do, visit the Visitor Information Centre inside Shrewsbury Museum & Art Gallery in The Square.
Contact (01743) 258888

For more information visit
originalshrewsbury.co.uk &
visitshropshire.co.uk



ARRIVE

LET THE TRAIN TAKE THE STRAIN,
OR COME ON TWO WHEELS -
SHREWSBURY'S A FRIEND TO
CYCLISTS AND LOW TRAFFIC LIVING

BY BIKE

Shrewsbury is connected to the National Cycle Network routes 81 and 44. Cycle right into town along the flat through The Quarry, our riverside park, on route 81. Or pick up route 45 north to Shawbury and Whitchurch.

BY TRAIN OR COACH

Shrewsbury's splendid grade II listed Victorian railway station sits under Shrewsbury Castle. It's a 43 mile hop from here to Birmingham New Street and a beautiful journey west into Wales. Popular routes include London (3h44), Leeds (2h23), Birmingham in: (56 mins), Manchester (1h7) and Liverpool (2h33). For more information visit nationalrail.co.uk or contact 0800 022 3720. A National Express Coach from London Victoria will get you to Shrewsbury by teatime - see nationalexpress.com

TAXIS

There is a taxi rank at the train station, or telephone:
Dells Taxi - 07745 724594
Star Cars - 01743 353535
Go Carz - 01743 365522

BY CAR

Shrewsbury is accessible via the A5 and M54. Choose from three Park and Ride car parks with buses operating Mon-Sat every 20 minutes: Oxon (SY3 5AD), Meole Brace (SY3 9NB) and Harlescott (SY1 4HA).

For details of pay & display car parks in Shrewsbury, and '15 minutes pop and shop' spaces, free parking, and contactless/MiPermit electronic payment, visit: originalshrewsbury.co.uk/car-parking

DISABLED ACCESS

Blue Badge parking is available Shoplatch, Castle Street, St Mary's Street, St Mary's Place, Claremont Street, Roushill, Beeches Lane, Princess Street, and Dogpole.

Some Hackney Carriage taxis are wheelchair accessible. Wheelchair accessible buses operate on all three Park Ride and routes.

For more information visit: originalshrewsbury.co.uk/car-parking

Dial a Ride offers alternative transport arrangements for those with difficulty walking or using public transport. Visit shrewsbury-dialaride.co.uk or contact (01743) 450270 (Mon-Fri, 9.30am to 3pm).



#FUNFACT

When you arrive by train, look out for Shrewsbury's world-famous Severn Bridge Junction Signal Box with its 180 levers, all dating back to 1903, many of which are still in use today!

DISCOVER

THE SAXONS GOT HERE FIRST
THEN CAME ROGER DE MONTGOMERY
FOUNDER OF OUR CASTLE AND ABBEY
THE DRAPERS DEALT IN WOOL
AND DARWIN STUDIED THE BEES

You'll do quite a bit of climbing in Shrewsbury. We've got the Saxons to thank for that. They set up camp here, around 700AD building little religious settlements on scrubby hilltops around the churches of St Mary's and (old) St Chads. Our old name was

Scrobbsbyrig - which, roughly translated, means fort in the shrubs! By the time of the first written reference to it in 901, Shrewsbury had grown into a fully-fledged town. Battles and skirmishes have been fought here over many centuries, mostly between the



-01



02

Boat Trips

Around The River Severn Loop

Every day 1st March - 31st October
6 trips on the hour | 11am - 4pm | 45-minute sailing

- Live commentary
- Dogs welcome
- Discounts for groups/concessions/children

- Refreshments
- Table service
- Evening cruises
- Theme evenings

PRE-BOOK OR BUY TICKETS ON-BOARD

Boat Address
Victoria Quay
Welsh Bridge
Shrewsbury
SY1 1HH
01743 369741
www.sabrinaboat.co.uk

Sabrina
goddess of the river

FIND OUT MORE

Shrewsbury Museum & Art Gallery is a great place to begin your day out in Shrewsbury. Find it in the old Music Hall in The Square. Explore the galleries and learn more about Shropshire's archaeology, geology & fossils, decorative arts and social and industrial history. www.shropshiremuseums.org.uk/smag/



English and Welsh. It's why we had a whacking great town wall and a brilliant castle, with its original motte still dominating the town (well, half of it - the rest slipped into the river).

century when Shrewsbury was a 'place of resort' for the rich local gentry.

Shrewsbury has Welsh sheep to thank for decades of prosperity, which has left a legacy of very fine architecture. In the 13th and 14th centuries, prosperous wool merchants including William Vaughan built stone mansions in courtyards behind the streets. And, at the height of the woollen cloth trade in the 1500s, rich merchants showed off by building half-timbered mansions here.

Charles Darwin spent his childhood years in Shrewsbury and was born in a grand house on The Mount. He wasn't a fan of Shrewsbury School (now Shrewsbury Library) and hopped off on board The Beagle, on his famous voyage of discovery, aged 22.



-03

We had a lively time of it during the English Civil War too - the town fell to Parliament forces in 1645 when a traitor let them in at the St Mary's Water Gate. The buildings of Shrewsbury are rich in stories, with every era represented from Mediaeval and Tudor to Georgian, Victorian and Modernist styles. Another heyday was in the 18th



-04

01 Shrewsbury Castle
02 St Alkmund's Square

03 Shrewsbury Library
04 The Old Market Hall, The Square

ORIGINAL SHREWSBURY AMBASSADORS



Throughout the warmer months visitors to Shrewsbury can discover the full range of what the town has to offer thanks to our team of Ambassadors. The Ambassadors, introduced in 2019, work alongside the Shrewsbury town guides and help visitors discover the hidden gems in the town.

Ambassadors are on duty on Saturdays and Sundays from 10am to 2pm. Their aim is provide a better experience for visitors and to help them make the most of all that Shrewsbury has to offer. You'll find them at points throughout the town and they can be spotted wearing their bright blue tops and a welcoming smile! You can also volunteer by going to the website below.



For more information:
t: 01743 358626 | w: originalshrewsbury.co.uk

Shrewsbury BID working in partnership with Shrewsbury Town Council and Shrewsbury Tourism Association



DISCOVER ALL SHREWSBURY HAS TO OFFER

ORIGINAL SHREWSBURY

ORIGINALSHREWSBURY.CO.UK

EXPLORE

THERE'S SO MUCH HISTORY IN OUR HIGGLEDY STREETS YOU'LL LOVE EXPLORING ON FOOT OR BY RICKSHAW!

Our historic centre has more than 700 listed buildings - every one of them with a story to tell! It's great fun getting lost in Shrewsbury. Explore our mediaeval shuts and passages and see where you pop out. There's a surprise around every corner.

THE SQUARE

The hub of activity for the town, as it was in Tudor times when the magnificent Old Market Hall was built to conduct the town's trade (c.1595-96) in cloth and corn. Nagging wives and

dishonest traders were once 'ducked' in the now vanished 'Bishop's Pool' in The Square.

Shrewsbury Museum & Art Gallery

Tucked behind the Old Market Hall, is Shropshire's flagship museum, now in the old Music Hall. A five-year restoration saw it annexed to the 13th century 'Vaughan's Mansion' to house the museum's extensive collections, which include a fabulous silver Roman mirror from Wroxeter. It has a busy programme of events and a great café with outdoor seating.



The Old Market Hall

SHREWSBURY CATHEDRAL

Discover the beauty ✦ Step into history



Shrewsbury Cathedral
Town Walls, SY1 1UE

OPENING HOURS:
MON - FRI
8.30AM - 4PM (UNTIL 1PM OCTOBER-APRIL)
SATURDAY
8.30AM - 3PM (UNTIL 1PM OCTOBER-APRIL)
SUNDAY
7AM - 7PM

(01743) 290 077
www.shrewsburycathedral.co.uk




The Square

#Fun TO DO

Hail a ride from the Shrewsbury Rickshaws - a free service on Fridays, Saturdays and Sundays. Dial 07768 131452 or visit

shropshirecyclehub.uk/rickshaws

The Old Market Hall

In the heart of town, our beautiful Old Market Hall (c.1596) served as a courthouse and a place of trade for generations. Climb the stairs and discover OMH - a much-loved arthouse cinema and café on the top floor.

BARKER STREET/ WEST END

Shrewsbury Market Hall

Our award-winning indoor market houses a superb collection of quirky foodie pop-ups, cafés, street food stalls and eclectic independent traders. Look out for its late nights, with a festival vibe. Voted Britain's Favourite Market 2023 and 2018!

Rowley's House and Mansion

The timber-framed Rowley's House and brick-built Rowley's Mansion were built for Roger Rowley, a wool merchant

and his son. The mansion is believed to be the earliest brick building in Shrewsbury.

TOWN WALLS

Walk along Shrewsbury Town Walls from Wyle Cop to Claremont Hill and you'll see a few of our famous landmarks - can you spot the last remaining watchtower in the walls?

Shrewsbury Cathedral

Known for its famous stained glass by the characterful artist Margaret Rope (1882-1953), it has a lovely café with an outdoor courtyard.

St Chad's Church

This iconic Georgian round church was built in 1792 and is an eye-catching landmark. Look out for Scrooge's grave in the churchyard, leftover from the filming of A Christmas Carol.

Old St Chad's Churchyard

Only the 15th century Lady Chapel remains of this once great church on Milk Street,

which was demolished in 1788 after the tower collapsed.

THE RIVERSIDE

The Quarry

You can't miss our 29-acres of beautiful parkland in the loop of the River Severn. Here you'll find our swimming pool, an outdoor splash park and playpark, with coffee and ice cream stops too. It's home to many great festivals, including the historic Shrewsbury Flower Show. Percy Thrower MBE, the famous TV gardening presenter, lived in Quarry Lodge until 1974, as parks superintendent.

The Bridges

It's great fun to walk the bridges in Shrewsbury. They have histories and personalities of their own. Follow the river from The Welsh Bridge to the English Bridge, with Porthill, Kingsland and Greyfriars bridges in between. Spot the remains of an old Franciscan Friary next to Greyfriars Bridge, or stop



Shrewsbury Castle

#Funfact

The Flaxmill Maltings were once over run with feral carts, brought in to keep the rodents at bay.

The Flaxmill Maltings is also known as the 'Grandparent of Skyscrapers'

a while on Kingsland Bridge and enjoy the rowers passing underneath. Alternatively, see the bridges from the water on Sabrina Boat, which offers daily trips along the picturesque River Severn.

Pengwern Boat Club is one of the oldest in the country (c.1881) and neighbouring Shrewsbury Boat Club is responsible for some of the finest rowing in the land.

CASTLE GATES (AND BEYOND)

Shrewsbury Library

This Grade I-listed building was home to Shrewsbury School from 1552 to 1882, attended by Charles Darwin. Look out for the boys' names, graffitied into the panelling!

Shrewsbury Castle

The original Norman fortification dates back to William the Conqueror. Our castle has seen real bloodshed through the centuries, including in 1138, when around 100 defenders were hanged from the battlements. The gardens are great for picnics and summer outdoor concerts and events.

Shrewsbury Prison

Also known as 'The Dana' this foreboding Victorian prison (with an even earlier Georgian jail beneath it) is now one of the world's foremost 'dark tourism' attractions and a popular filming location. Public hangings once took place above the gatehouse. Now home to prison breaks, paranormal investigations, guided tours and corporate away days, it's a fascinating place.

Shrewsbury Flaxmill Maltings

Dubbed a grandparent of the modern skyscraper because of its iron frame, this magnificent industrial building played a key role in

Britain's industrial past as a purpose-built flax mill, and then maltings. After a multi-million pound restoration, the main mill opened to the public again in 2022 and now houses an interactive exhibition ('The Mill') and a great café.

BEAR STEPS

Climb the steps into the heart of mediaeval Shrewsbury, with its narrow streets and old mansions and 'jettied' upper storeys. This area was once home to The King's Market before it moved to The Square. Look out for the names of streets around here, which give a nod to the past: 'Fish Street', 'Butcher Row' and 'Grove Lane'!



The Pengwern Boat Club and Sabrina Boat



The Dingle, Quarry Park

#Funfact

The decorative carvings in the timberwork of Drapers' Hall were created by the Shrewsbury school of carpentry in the late 1500s. Drapers Hall is now home to the restaurant RHUBARB.

Bear Steps Art Gallery

Local art exhibitions are often held in this 14th century hall, which is open to the rafters. It was restored by the Shrewsbury Civic Society in the late 1960s/70s.

St Alkmund's Church

Said to have been founded by King Alfred's daughter in 912 and rebuilt in the late 1700s, this solid-looking church has a beautiful East window depicting the Assumption - and a great lunchtime concert series.

Butcher Row (Abbot's House)

Once home to the town's butchers' shops and now a lively hub of restaurants, pubs, cocktail bars and the Grade II listed Prince Rupert Hotel.

ST MARY'S & DOGPOLE

The Parade Shopping Centre

This Grade II listed building with its massive Doric columns, is the former home of the Royal Salop infirmary. It's home to a quirky collection



of independent shops and a lovely café overlooking the River Severn.

St Mary's Church

This beautiful, town centre church has some of the finest stained glass in Britain, including the famous 14th century Jesse window, and one of the tallest spires in England. Now used for quirky events, fairs and concerts and there's a good café in the back of the church too.

Drapers' Hall

Built for Shrewsbury Drapers Company, the town's oldest surviving ancient guild, this beautiful, timber-framed building is now a popular boutique hotel and the restaurant RHUBARB

WYLE COP

The half-timbered, jettied fronts of Tudor mansions sloping down to The River Severn make this one of Shrewsbury's most famous streets. You'll find a mix of independent shops, a contemporary art gallery, wine bars, cafés and restaurants,

historic pubs and the famous Shrewsbury wine merchants Tanners.

The Lion Hotel

This historic hotel dates back from before 1618 and was once the premier coaching inn on the London to Holyhead route. Famous visitors here have included Charles Dickens, Paganini and Benjamin Disraeli. It boasts a spectacular 'Adam' style ballroom.

Henry Tudor House

A perfect-looking mediaeval timber-framed townhouse, built in 1426 for a local brewer. Watch out for the ghosts of Henry Tudor's soldiers on their way to defeat Richard III!

The Nag's Head

Grab a pork pie and a jar of ale and dine like a mediaeval peasant in the garden of this historic public house, sitting inside the ruins of a timber-framed mansion. Just don't look at the picture in the haunted room.

Tanners Cellars

This historic, family-owned independent wine merchants

was established in 1842 by sea captain William Tanner. Parts of the current shop on Wyle Cop date back to the 1490s.

FRANKWELL

Theatre Severn

Opened in 2009, our theatre has a lively programme of events and a famous pantomime every winter. The balcony overlooking the river is a nice spot for a pre-performance glass of wine.

University Centre Shrewsbury

The university opened in 2014, established by Shropshire Council and the University of Chester, with a main teaching and learning centre at Frankwell Quay.

ABBEY FOREGATE

Shrewsbury Abbey

Founded in 1083, by Roger de Montgomery, it was once one of the most powerful monasteries in the land. Henry VIII destroyed quite a bit of it and the engineer

Thomas Telford ran his London to Holyhead Road right through it.

Shropshire Wildlife Trust

The Cut Visitor Centre is opposite Shrewsbury Abbey and has a planted central courtyard with a 'Wild Child' garden and mud kitchen and regular wildlife themed talks and events.

Coleham Pumping Station

This Victorian chapel-like building on the bank of the River Severn houses two steam-driven beam engines, which pumped sewage here until 1970. It has family-friendly, open days when you can see the engines in action.

And finally...

Mount House

This fine Georgian house on The Mount in Shrewsbury was the childhood home of Charles Darwin, born here in 1809. It has recently been acquired by a businessman with plans for a café and small museum.



01 St Chad's Church

02 Shrewsbury Flaxmill Maltings

03 Tanners Wine Merchants





#LOCALLY SOURCED #GLOBALLY INSPIRED SEASONAL FOOD AND DRINK

CSONS is a friendly cafe-restaurant in the heart of town serving breakfast, coffee, lunch, tea, cakes and dinner.

Our food is different; we use the best locally sourced produce and treat it with the respect it deserves by creating simple, unpretentious, globally inspired and exciting dishes that shout about the ingredients, reflect the seasons and are full of flavour.

Come and check us out, we're pretty confident you'll like what you find.

We'd also like to meet you!

BREAKFAST-LUNCH-DINNER COFFEE-TEA-CAKES

8 Milk Street, Shrewsbury
SY1 1SZ Tel: 01743 272709
www.csons-shrewsbury.co.uk



DRINK & DINE

FIND OUR EATERIES UNDER THE EAVES CANDLELIT OR URBAN CHIC, WOOD PANELLED, OR TRENDY INDUSTRIAL FUSION, FAST CASUAL, FINE DINING OR FUNKY POP-UPS SHREWSBURY ALWAYS DELIVERS!

We've so many cool eateries in Shrewsbury, hiding away under the eaves. Here are a few to give you a flavour.

BURGERS

Brooklyn Craft on Shoplatch aims for an offbeat American vibe (takeaway or dine-in), whilst burgers at The Beefy Boys on High Street are unapologetically calorie-laden. Lyon's Den takes some finding, downstairs off St Mary's Water Lane, but its gourmet burgers are worth the hunt. For veggie burgers, try Okra on the High Street.

FINE DINING

In smart premises overlooking Victoria Quay, The Walrus delivers ambitious tasting menus. La Dolce Vita in Hill's Lane has Italian style, six-course tasters and superb service. The Golden Cross on Princess Street has set the standard for years as a special dining destination. Also try Rhubarb at Drapers Hall - where else can you dine like a Lord on a high table? The Lion and Pheasant still pulls its weight on Wyle Cop,

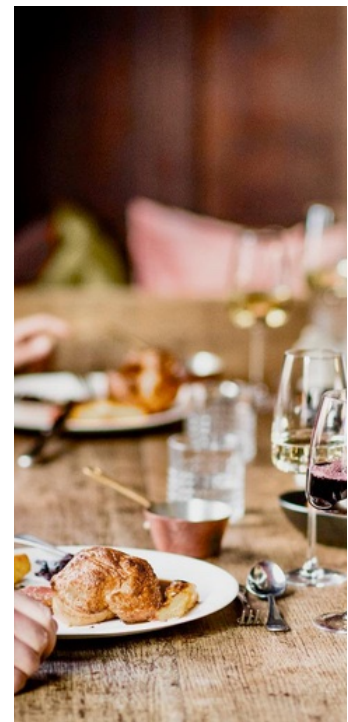
whilst fine dining Indian style can be found at Avatar on Mardol.

NIGHTLIFE

Old fashioned rakes will feel right at home in The Libertine Cocktail Bar in Butcher Row, with its sumptuous decor, or there's the prohibition-themed Blind Tiger on Hill's Lane and on Ten & Six Champagne Bar on Mardol will take you down the rabbit hole. Bar Oil and Glou Glou are funky watering holes on Castle Street, both with regular live music and The Alb on Smithfield Road promises 'Cocktails & Dreams' in equal measure. For cheap beer try Montgomery's Tower (known affectionately as 'Monty's') on Lower Claremont Bank.

PUB FAVOURITES

Shrewsbury is awash with historic pubs and perfect for an ale trail. Enjoy pork pies and traditional ales in the garden of The Nag's Head on Wyle Cop, or marvel at ancient frescoes in the half-timbered King's Head on Mardol. For superior real ale, dive into the Three Fishes on Fish Street. For outdoor space, try Cromwell's Tap



on Dogpole and The Admiral Benbow on Swan Hill. The Loggerheads on Church Street, The Wheatsheaf on The High Street, The Salopian Bar on Smithfield Road, The Hole in The Wall on Shoplatch and The Bull Inn on Butcher Row all have regular live music.

CRAFT BEERS

For funky watering holes try taproom and bottle shop Tap and Can on Castle Gates and Rad Beer on Hereford Road. House of Grain on Wyle Cop and Oil on Castle Street are cool hangouts with great craft ales.

DRY NIGHTS

There's a great alcohol free bottle shop dry, on Wyle Cop,



ORCHARD CAFÉ

The Orchard is set in the beautiful surroundings of Shrewsbury Cathedral, overlooking Town Walls. Providing a wide range of meals, snacks and daily specials - all freshly prepared in our on-site kitchen and served in the relaxing atmosphere of the café and courtyard.

The Orchard café is run in conjunction with the Roman Catholic Diocese of Shrewsbury and the Shrewsbury Cathedral parish.

Monday - Sunday
10am - 3pm


www.orchardshrew.uk
(01743) 242 118



OrchardCafeShrewsbury





Orchard Cafe Shrewsbury



THE NAG'S HEAD

WYLE COP

HISTORIC PUB
LARGE BEER GARDEN
REAL ALES

and most bars and pubs now serve delicious mocktails and low or no alcohol beers too.

LATE NIGHTS

The Buttermarket is a vast nightclub in our former butter market, with a busy lineup of gigs, tribute acts and events. Fever has been mopping up the party animals for years on Hill's Lane, whilst live music venue Albert's Shed and cabaret club The Boujee Lounge (Castle Foregate) also offer late night dancing.

DAYTIME BUZZ

The Cat's Pyjamas is a busy brunch and lunch-stop in The Square. Stop. Coffee in Shrewsbury Museum & Art Gallery and its sister café by Greyfriars Bridge have excellent lunch menus, as does Number Four Butcher Row. Or find lots of choice for lunchtime eats under one roof in The Market Hall: The Bird's Nest café in the market has long been the epicentre of Shrewsbury 'cool' or visit Moli for delicious dumplings - or sip something a little stronger at PetitGlou and Gindifferent.

CAFE CULTURE

We're proud of our independent café culture in Shrewsbury. Straight off the train, you'll find Iron & Fire at the station approach and Shrewsbury Coffeehouse



Rhubarb at Drapers Hall

on Castle Gates (look out for funky pop-ups and art exhibitions). For cats and coffee, try Paws café on Mardol. Dog walkers flock to House Coffee Co. on Longdon Coleham or Ginger & co. on Princess Street, fry ups and classic afternoon tea.

Grab a board game at nerdy coffee Co. or, for outdoor space head to Orchard Cafe at Shrewsbury Cathedral, or Daily Brews with its tables on The Square. Favourites just outside the centre include In Good Hands in Frankwell and The Shed in Abbey Foregate.

AFTERNOON TEA

Camilla, opposite St Alkmund's Church, is a genteel and well-established tea room. The Gallery Tearooms on Princess Street offer homemade lunches, fry ups and classic afternoon tea.

Taste of Shrewsbury has an unexpectedly lovely upstairs period tearoom on Mardol, or try the Mad Hatter's afternoon tea at Ten & Six Champagne Bar for a tea party like no other!

For a smart treat, try the Lion & Pheasant Hotel on Wyle Cop or The Loopy Shrew on Bellstone.

The Gallery Tearoom



Traditional Tea & Coffee Shop with waitress service

- tea & coffee
- light breakfasts
- lunches
- cream teas

All food made on the premises by our own cooks

24-25 Princess Street, Shrewsbury, SY1 1LW (just off The Square)
01743 355550



House of Yum- Shrewsbury Market Hall

Ginger & Co. Coffee
Princess Street, Shrewsbury
(Back of the Square)

Speciality Coffee Loose Leaf Tea Independent
Fresh Light Lunches Homemade Cakes Takeaway
Princess Street Locally Sourced Seasonal Food

gingerandcooffee @ginger_and_co_coffee

CÔTE

**MODERN FRENCH FOOD RIGHT
IN THE HEART OF SHREWSBURY**

Open seven days a week for breakfast, lunch & dinner

14-16 The Square, Shrewsbury, SY1 1JZ
01743 296 314 www.cote.co.uk

OUTDOOR

Peaberry café takes over a stretch of Milk Street in the summer for pavement dining in the heart of town. For the best Mediterranean style secret gardens visit The Olive Tree in Frankwell and Wyle Blue World off Wyle Cop (summer months only).

Watering holes The Old Post Office on Milk Street, The Shrewsbury Hotel on Smithfield Road, The Hop & Fryer and The Nags Head on Wyle Cop all have outdoor seating.

RIVERSIDE

The Boathouse pub by Porthill Bridge, is hard to beat for riverside drinking and The Coleham Tap also has a nice riverside terrace. The River View café behind The Parade Shops has a lovely view over the River Severn, looking towards Haughmond Hill. Hickory's Smokehouse, The Armoury city pub and the Riverbank Bar & Kitchen have waterside seating at Victoria Quay, or why not enjoy a drink whilst taking a boat trip on Sabrina.

INTERNATIONAL

Istanbul is a top favourite in Frankwell with generous plates of meze, kofte and kebabs from the grill. Or try A la Turka on Wyle Cop, or Cypriot meze restaurant Exo Poli on Longden Road. AleOli y Tu in Frankwell and Casa Naranjo are favourite tapas restaurants, whilst the globally inspired, family-run Csons on Milk Street does

everything from breakfast through to 'Mystery Menu' special dinners. House of the Rising Sun on Butcher Row is good for fusion and, for Thai food, it's hard to beat House of Yum in Shrewsbury Market Hall, although we've a raft of other Thai restaurants too.

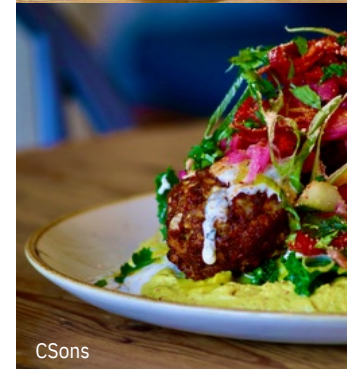
Umai on Princess Street has sushi, sashimi and popular bento boxes. For pizza, visit the urban chic restaurant Dough & Oil on Castle Street. Tutto Bene in the Market Hall and La Dolce Vita on Hill's Lane set the standard for Italian food, whilst Osteria on Mardol is great for family dining. La Lanterna serves Italian classics in the crypt of St Alkmonds Church and La Piazzetta is a reliable eatery on The Square.

For French cuisine, try Côte Brasserie on The Square.

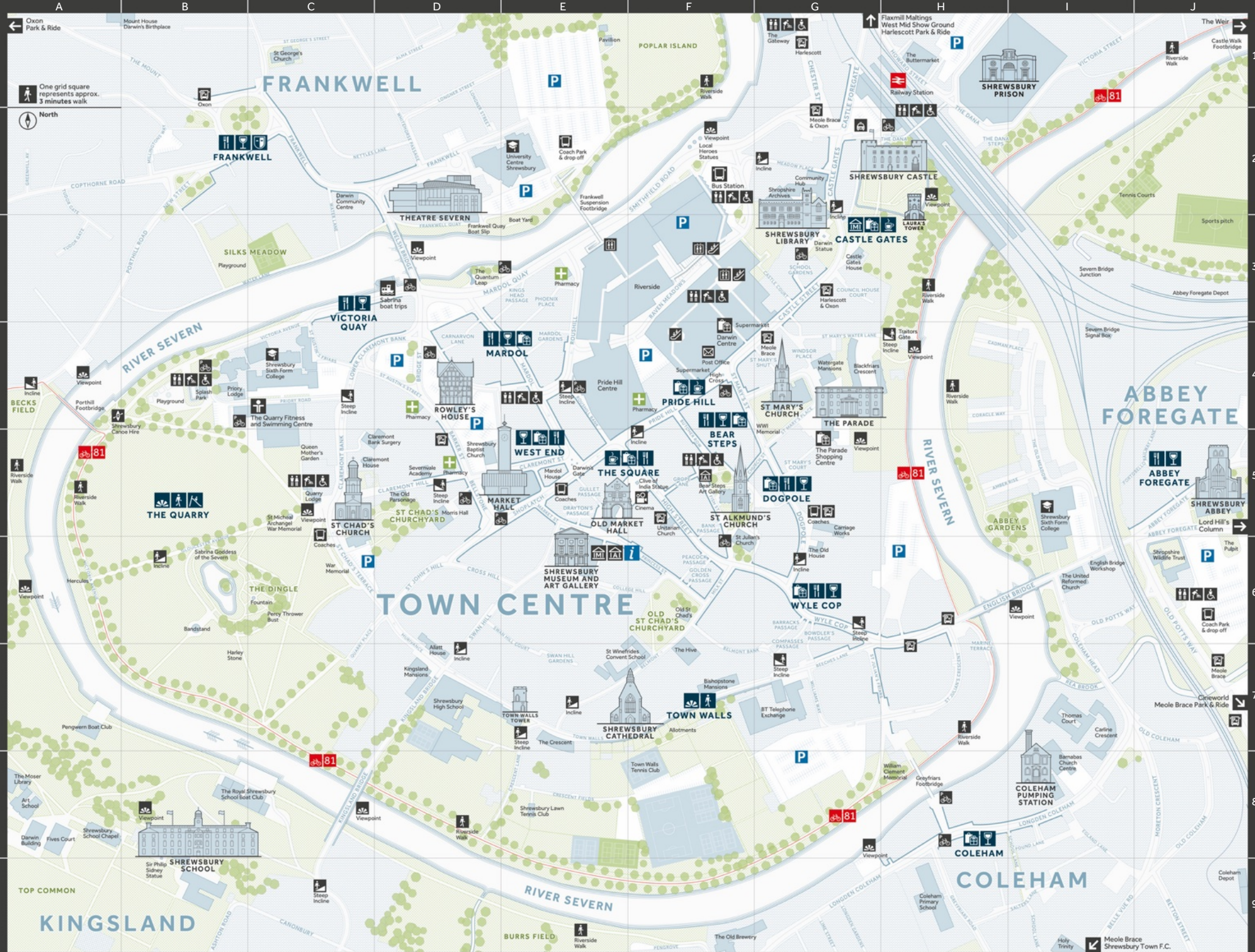
Favourite Indian and South Asian restaurants include Café Saffron on Hill's Lane, The Curry House and Avatar on Mardol. Third Place in Frankwell and The Masala at St Julian's Friars.

VEGAN, VEGGIE & PLANTBASED

Okra on the High Street does laid-back veggie lunches, or visit Lebanese inspired vegan takeaway Plantkind Falafel, on Milk Street. Itadakizen on Fish Street, offers Japanese vegan cuisine or there's Kanu Poké on Roushill for vegan Pacific Fusion. The Greenhouse café has a bright, airy vibe above Milk Street.



SHREWSBURY - THE ORIGINAL ONE-OFF



Oxon Park & Ride
One grid square represents approx. 3 minutes walk
North

TOP COMMON
BURRS FIELD
KINGSLAND

COLEHAM
MEOLE BRACE PARK & RIDE
MEOLE BRACE SHREWSBURY TOWN F.C.

ST MARY'S & DOGPOLE

SHREWSBURY'S HIDDEN GEM, JUST
WAITING FOR YOU EXPLORE

Stretching from the top of Pride Hill to its junction with Wyle Cop, St Mary's Street transitions into Dogpole. Dogpole gets its name from the pole that was suspended across the end of the street forcing those on horseback to dismount.

It is home to some of Shrewsbury's most historic buildings such as The Drapers Hall which is home of The Shrewsbury Drapers Company and now the restaurant RHUBARB, St Marys Church, whose Jesse window is world renowned, and The Parade Shopping Centre or the Royal Salop Infirmary to give it its original name. Further down on Dogpole sits The Old House, this timber framed townhouse dates to the 1500s.

Dotted between all the historic buildings, there are shops aplenty. Visit Millard & Lancaster, and Number 8 for a carefully curated collection of home furnishings art, & gifts, Marmalade has a wonderful range of bespoke lampshades & there is a design studio at Interiors at St Mary's.

If it's jewellery you are after, Thomas Glover specialise in fabulous antique jewellery and vintage watches & Sires Master Goldsmiths create handmade Family Crest Signet rings along with redesigning and transforming pre-owned jewellery & gem stones in to one off pieces..

For those music lovers amongst you, the team at Listen Audio specialise in all things hi-fi & are located inside an old chapel called The



St Mary's Church

Tabernacle, which was built in 1862. For the fashionistas, Maggie Mae's Vintage has an incredible range of vintage clothing & accessories, and Kashmir & Silk delights with its wonderful range of silk & Kashmir scarves & clothes sourced directly from Kashmir together with rugs accessories and more.

Head to Aroma of Shrewsbury for a journey in time. Opened in 1981 selling freshly roasted coffee & loose leaf tea this family run Shrewsbury original is a must see. The smell alone is worth a visit, but the Belgian Chocolates will drag you in. Once you have finished

#Funfact

The Royal Salop Infirmary - now The Parade Shopping Centre - is where, for a time Charles Darwin's father practiced as a doctor

shopping head to Rhubarb which is situated within the incredible Drapers Hall, with its inglenook fireplace & oak panelled walls for a bite to eat or a cocktail. Or fancy lapping up some rays, Cromwell's Tap House is the place to do so, its secluded beer garden is a local favourite. If it's a pint of real ale you are after, then The Loggerheads is the place to go. Situated only a few yards off St Mary's Street, it has been a public house since 1780.

A wonder down St Mary's Street and Dogpole will no doubt bring that little bit of extra joy to your visit to Shrewsbury.



The Old House


KASHMIR AND SILK

Handmade Kashmir
Jackets - Scarfs - Pashminas - Home Furnishings
6 St Mary's Street, SY1 1EB
www.kashmirandsilk.co.uk

THOMAS GLOVER
visit the only specialist ANTIQUE
JEWELLER in Shrewsbury.


01743 363 252 info@thomas-glover.com 5 St Mary's Street www.thomas-glover.com

Aroma
of Shrewsbury

COFFEE BEANS
LOOSE LEAF TEA
EQUIPMENT
CHOCOLATES

WWW.AROMA-COFFEE.CO.UK

M&L
MILLARD & LANCASTER

Boutique Lifestyle Store
18 St Mary's Street, SY1 1ED
www.millardandlancaster.co.uk

N^o
e i 8 h t
SHREWSBURY
8 St Mary's Street, Shrewsbury
Furniture - Lighting - Accessories
Soft Furnishings - Gifts
www.number8shrewsbury.co.uk


SIRES
MASTER GOLDSMITHS
ENGLAND

DESIGNERS & MAKERS OF BESPOKE,
HANDCRAFTED FINE JEWELLERY & SPECIALISTS IN
QUALITY REPAIRS, REMODELLING & COMMISSIONS
www.siresmastergoldsmiths.co.uk

RHUBARB At Drapers Hall

RESTAURANT • ROOMS • BAR

10 St Mary's Pl
Shrewsbury
SY1 1DZ
01743 341105
drapershallshrewsbury.co.uk


Rhubarb at Drapers Hall
rhubarb_at_drapers_hall
Est. 1485

Shropshire's Premier Hi-Fi Shop

turntables
headphones
amplifiers * cables
streamers * wireless
loudspeakers * subs
DACs * interconnects
CD players * radios
hi-fi racks & stands


listen
audio

Naim * Rega * REL
Audiolab * Chord
Linn * Neat * Focal
Grado * Bluesound
Acoustic Energy
Technics * Atacama
Meze * Fyne Audio
QED * Ruark * Atoll

01743 232377 9 Dogpole SY1
www.listenaudio.co.uk



St Mary's Street



William Major
Shrewsbury
1881

5th Generation



Shrewsbury's Oldest Retailer

Mens & Womenswear

MAJORS

1874

Shrewsbury - Welshpool - Oswestry

MAJORS Shrewsbury store
is on Claremont Street
opposite the Market Hall

Partners with
Parker Taylor
Bridgnorth

SHOP LOCAL

FROM CHIC, INDEPENDENT BOUTIQUES AND ORIGINAL ONE-OFF INTERIORS' SHOPS, TO TOP BRANDS AND FUNKY SHOES, SHREWSBURY IS A RETAIL PARADISE

INDEPENDENTS

Wyle Cop famously boasts the longest row of independent shops in Britain. Here you'll find the famous Tanners Wine Merchants, upmarket boutiques and specialist retailers such as Christmas Perks, cooking Kneads, Trek Bicycles, the Christian book Shop Illuminate, cashmere retailer Turtle doves and Wrekin Whiskies.

GIFTS & INTERIORS

White Orchard on Butcher Row has beautiful things, or

try Millard & Lancaster, and Vinegar Hill on St Mary's Street. On Wyle Cop, there's Wyle Blue World, UNIQ and The Toy Box. For all things Harry Potter try Labyrinthin Grope Lane. For interiors, choose from Interiors at St Mary's Street and Number 8. Or there's White Lotus living, Tudor Galleries (Juliet Chilton) and Wyld Home on Wyle Cop and Marmalade at Dogpole.

FOOTWEAR

Teestar Footwear on Dogpole is Shrewsbury's oldest



Number 8



Butcher Row

The Garden Room



Plants
Pots
Plant care

Terrariums
Gifts
Workshops

18 Princess St, Shrewsbury SY1 1LP
www.TheGardenRoomShop.co.uk



Carvell

Designer Fashion | Lingerie & Swimwear

13 The Square
Shrewsbury
SY1 1LH
01743 368182
carvellonthesquare.co.uk

13 Butcher Row
Shrewsbury
SY1 1UW
01743 354903
carvell-lingerie.co.uk

independent shoe retailer. For Italian footwear and top brands, there's Prêgo Shoes (for men) on The Square and Prêgo on The Lane (for women), on Grope Lane. Or visit or Charles Clinkard, Jones Bootmakers and Moshulu on The High Street. For little feet, try Tog & Cloggs on Princess Street, or Feet First on Wyle Cop.

FASHION

The Square is good for designer shopping (Moss, Barbour, Jigsaw, Carvell on The Square, Pockets) and there's a Fat Face too. Try the High Street for major brands (Joules, Phase Eight, Seasalt, White Stuff, Saltrock, Crew Clothing Company). For menswear we've Halon on the High Street, Majors on Mardol Head and Martin David in The Parade, or Templeton Jones on Princess Street. Womenswear boutiques Ella Cru and Oberon can be found on Wyle Cop and there is

beautiful lingerie at Carvell Lingerie and Swimwear on Butcher Row. For pre-loved we've New to You on Princess Street, or The Wardrobe on Town Walls.

The Parade

An unusual shopping experience inside the former Royal Salop Infirmary in St Mary's Place. Inside there is a wonderful cafe with a river view, a clutch of health and beauty businesses, the long established Martin Davis Menswear, photography studios, art & collectables, secondhand book, a specialist wool shop, award winning milliner, Japanese cookware and The Vegan Hub.

Darwin Centre

There's a mix of local and national chains in our undercover Darwin Centre, including Green Options and the Shrewsbury Duck Store.. Many big national brands are found here too and

The Collective showcases independent traders.

www.shrewsbury-shopping.co.uk

Shrewsbury Market Hall

Ask anyone in Shrewsbury and they'll sing the praises of or multi award-winning Market Hall. voted Britain's Favourite Market in both 2018 and 2023. Open from 8am to 4pm with regular late nights, where the market comes alive with a festival vibe. Find over 60 independent traders, from the highest quality fresh produce; meat and fish, artisan cheese and charcuterie, to handmade chocolates, fair trade spices and fine wines. Special interest stalls include; independent record, vintage clothing, gift, comics & memorabilia, card, board games, second hand books, dried flowers, homeware, kitchen foods, jewellery, bags, hats, and arts & crafts. If you are feeling peckish, there are 11 cafes and bars to choose from.

FASHION, FOOD & FUN

Shop the latest trends and stop for a bite to eat in the heart of Shrewsbury.

M&S EST. 1884 | SKECHERS

COSTA | PRIMARK

H&M | LEVELUP ESCAPES

Entertainer The Toy Shop.com | F.HINDS

THE COLLECTIVE | Clarks.

Find us on Pride Hill, Shrewsbury

Shrewsbury-Shopping.co.uk | Facebook | X | Instagram



Denim | SPEED | THE DARWIN SHOPPING CENTRE | THE B... | THE PARADE



SODEN
COLLECTION



As mentioned in **The Guardian**

SODENCOLLECTION.COM

CONTEMPORARY AND MODERN ART

Open for Informal browsing Tuesday - Saturday
80 WYLE COP SHREWSBURY SY1 1UT

GINDIFFERENT
ORIGINAL
SHREWSBURY
GIN

Infused with honey from Shropshire hives

Citrus forward dry gin with a hint of bergamot, black & pink peppercorns

www.theshrewsburygin.co.uk

EXCLUSIVELY AVAILABLE AT
SHREWSBURY MARKET HALL

EXPERIENCE

SHREWSBURY IS AN EXPERIENCE. WANDER INTO TOWN AND YOU'RE GUARANTEED TO FIND SOMETHING TO VISIT, WATCH, OR DO.



Shrewsbury Prison

Browse a Market

The Square hosts a wonderful farmers' market and a 'Made in Shropshire' craft market every first Friday and second Saturday of the month.

Catch a Show

Theatre Severn has an impressive annual programme of events, including top quality comedy, live music and drama. Or visit the Old Market Hall for a unique independent cinema experience.

Find a Festival

There's always something going on in Shrewsbury! See our full list of the most popular events in our Festival Guide.

Go to Prison!

Book a guided tour at Shrewsbury Prison, one of the world's best 'dark tourism' attractions, where you'll find about life in a Victorian prison, visit the execution room and learn what it's like to work as a prison guard in a modern jail.

Enjoy an Exhibition

Bear Steps art gallery in St Alkmonds Place has free exhibitions of local artists. Also try Shrewsbury Coffeehouse on Castle Gates, The Hive on Belmont, The Gateway on Chester Street, or Shrewsbury Museum & Art Gallery. For galleries, there's the contemporary art gallery The Soden Collection on Wyle Cop, or Callaghan Fine Paintings on St Mary's Street.

Escape the Room

Shrewsbury Prison offers 10 cutting edge escape rooms with two themes: 'The Cell' is a family-friendly, entry level escape room, or there's 'The Hole' for an extra challenge (a self-guided tour of the prison is included in the ticket price). Or look out for their famous Prison Break events when you'll put on an orange jumpsuit and try to break out for real! LevelUpEscapes in the Darwin Centre also offers

multiple rooms and a variety of themes.

Catch The Boat

Named after the goddess of the River Severn, The Sabrina Boat offers hourly, boat trips from 11-4pm daily from March to October. The 45 minute daily sight-seeing tours around the River Severn loop include table service and live commentary. Look out for special trips: afternoon teas, Sunday lunches and Tuesday evening dinner & cruise nights. Plus themed cruises: Mama Mia, Motown Cruises, Back to the 80s, cheese & wine, gin tasting and more. Ghost cruises run throughout October. Find it at Victoria Quay, by the Welsh Bridge. Visit www.sabrinaboat.co.uk or contact (01743) 369741

Hire a Bike

Enjoy a flat ride along The River Severn in The Quarry, or book a guide for a group ride in

Shrewsbury Market Hall

Shop. Eat. Drink.

Discover the multi award-winning
Shrewsbury Market Hall

Open Tuesday-Saturday, 8am-4pm
(selection of cafes & stalls open Thursdays)

Find us beneath the clock tower
Claremont Street, Shrewsbury SY1 1HQ

www.shrewsburymarkethall.co.uk

@markethallshrewsbury @markethallshrew



The Quarry & Sabrina Boat

SHREWSBURY FLAXMILL MALTINGS

Visit the Grandparent of the Modern Skyscraper

There's lots to see and do at Shrewsbury Flaxmill Maltings

The Mill Exhibition & Shop
Family Activities and Fun Events
Behind-the-Scenes Guided Tour
Turned Wood Café

Find out more
ShrewsburyFlaxmillMaltings.org.uk

Historic England Shropshire Heritage Fund

the Shropshire hills. Visit BikeHire Shrewsbury on Facebook or maxbikespr.co.uk

Join a Parkrun

Crowds gather for this friendly, free 5km run in The Quarry every Saturday at 9am. Don't just watch - join them! There's a Junior Park run on a Sunday too.

Walk the Dog

Roam The Quarry and riverside in the heart of town or the Rea Brook Valley Local Nature Reserve. Lyth Hill has great views, Haughmond Hill has a gravel track, good for mobility scooters, and cafe. Further out are The Wrekin, Earl's Hill at Pontesbury and Nesscliffe Country Park with Kynaston's Cave and an Iron Age hillfort.

Hear the Music

Enjoy free lunchtime concerts at St Chad's Church on Fridays

and at St Alkmund's Church on Tuesdays.

Watch a Match

Shrewsbury Town Football Club plays at Montgomery Waters Meadow, with a devoted local following.

Join a Tour

Join Sabrina Boat from March to October for a river tour with live commentary about the history and sites of the town (every hour between 11am-4pm) and for ghost cruises

throughout October. To book tickets visit sabinaboat.co.uk Walking tours usually depart from The Square at weekends. Or try a ghost tour in the autumn, or the famous A Christmas Carol guided tour, visiting sights from the filming of the 1984 Dickens adaptation.

Ask about tours at the visitor information centre at Shrewsbury Museum & Art Gallery.



Visual Art Network

The Visual Art Network (VAN) Gallery on the middle level of the Darwin Shopping Centre has a wide selection of work for sale by local artists and makers including: paintings, prints, ceramics, textiles, sculptures, jewellery, woodwork, glasswork and greetings cards.

Registered Charity 1087383

www.visualartnetwork.org.uk

Shrewsbury Museum & Art Gallery in The Square will keep the kids busy for a good few hours, with great interactive exhibits and there are regular workshops & activities, or visit The Soldiers of Shropshire Museum at Shrewsbury Castle, where they'll love running up to Laura's Tower. Theatre Severn usually has a good selection of shows just for kids.

Enjoy a swim session at The Quarry Swimming and Fitness Centre, or the play park and splash park next to the River Severn in The Quarry. You can hire canoes there too and A great family activity is to take the family on a leisurely trip around the medieval town via the river. Sabrina boat offers 6 trips every day from 1st March to end of October. Family and children discounts available. Try a Prison Break or axe throwing at Shrewsbury Prison, bowling at Hollywood Bowl, or take them on the Shrewsbury Treasure Hunt. Shropshire Wildlife Trust has a sweet mud kitchen and regular activities and workshops at The Cut Visitor Centre in



CHILDREN & FAMILIES

SHREWSBURY HAS PLENTY TO KEEP YOUR LITTLE ONES BUSY

Abbey Foregate. Get active with the kids at Jump In trampoline park, or visit Climbing Hut Shrewsbury in Battlefield. For soft play, we've Little Rascals on Monkmoor Road, or Wacky Warehouse at The Two Henrys in Battlefield. If petting farms appeal, then Home Farm at Attingham is a small but sweet option, or there's Hoo Zoo and Dinosaur World and Park Hall Countryside Experience within a short drive from Shrewsbury. Battlefield Falconry Centre has a nice collection of 30 birds, with the paddleboards and aquabikes great Battlefield 1403 café to escape islands on the lake. next door. Jump In trampoline park, or visit Climbing Hut Shrewsbury in Battlefield. For soft play, we've Little Rascals on Monkmoor Road, or Wacky



Warehouse at The Two Henrys in Battlefield. If petting farms appeal, then Home Farm at Attingham is a small but sweet option, or there's Hoo Zoo and Dinosaur World and Park Hall Countryside Experience within a short drive from Shrewsbury. Battlefield Falconry Centre has a nice collection of 30 birds, with the paddleboards and aquabikes great Battlefield 1403 café to escape islands on the lake. next door.

EVENTS

SHREWSBURY HAS MORE FESTIVALS IN ITS ANNUAL CALENDAR THAN ALMOST ANY OTHER UK MARKET TOWN. OUR MOST HISTORIC EVENT, THE SHREWSBURY FLOWER SHOW, DATES BACK TO 1836.

JAN/FEB

Snowdrop Walks

Snowdrop walks can be found at Winsley Hall, Westbury, Eyton Hall on the Weald Moors, Cound Guildhall, and Attingham Park just outside of Shrewsbury. **Darwin Festival** Held around February 12th, this celebration of the birthday of naturalist Charles Darwin, born in Shrewsbury in 1809, takes place over a whole week.

MARCH

Shrewsbury 10K

Shrewsbury's road race event begins and ends in The Quarry.

APRIL

Shrewsbury Steampunk

Festival This wonderfully wacky event inspired by Victorian-era industrialism involves fire eaters and

teapot racing!

Shropshire Tasty Trail

The Tasty Trail was created by Shropshire Festivals and has now migrated to the beautiful Oteley estate near Ellesmere. The slogan 'Eat, Drink, Walk, Repeat' pretty much sums it up.

MAY

Pengwern Boat Club Regatta

Watch crews from across the country in action, enjoy the BBQ and refreshments and the buzz of the action on the riverside. **Shropshire County Agricultural Show** Created in the late 19th century, this much-loved event at the West Mid Showground showcases our county's agricultural heritage.

JUNE

Shrewsbury Arts Trail

Our arts trail brings famous sculptures and artists to town each summer, with a host of linked exhibitions, showcasing regional and national artists.

UK Proms in the Park

A night of classical music outdoors at the West Mid Showground, featuring the UK Proms Orchestra and special guests. **Shrewsbury Food Festival** This popular festival

moves into The Quarry with cookery demonstrations, chef schools, kids' entertainment and live music.

JULY

Let's Rock Shrewsbury

It's the UK's biggest Retro Festival, apparently - and a popular summer highlight when it stops off in The Quarry.

Battle of Shrewsbury

Experience everyday life on the edge of the great battlefield at Battlefield 1403, with a mediaeval village, traditional crafts and battle reenactments. **Shrewsbury**

Dragon Boat Festival

Watch teams race against one another to the beat of a drum in 40ft dragon boats in this giant and popular charity race at Pengwern Boat Club.

AUGUST

Shrewsbury Flower Show

This historic event in The Quarry features huge marquees filled with floral displays, talks from expert gardeners and chefs, main arena entertainment and a mega fireworks display.

Shrewsbury Folk Festival

An epic celebration of folk music over the August Bank Holiday at the West Mid Showground.



Shrewsbury Folk Festival

Shrewsbury Steam Rally

This massive steam and vintage vehicle rally at Onslow Park has all the sights, sounds and smells of steam power!

SEPTEMBER

Coracle World Championship

Teams from local businesses cross the River Severn from Pengwern Boat Club in tiny round boats in aid of charity.

Shrewsbury Heritage Open

Days Historic buildings open their doors as part of

England's largest festival of history and culture.

OCTOBER

Shropshire Oktoberfest

One of the leading beer festivals in the UK, this giant party in The Quarry captures the spirit of a German Oktoberfest.

Shrewsbury Half & Metric

Half Marathon Starting at the West Mid Showground with a route usually through the town centre.

Ghost Cruise on Sabrina

Cruise down the river severn whilst listening to tales of ghosts and the history of shrewsbury. Select evenings.

NOVEMBER - DECEMBER

The Shrewsbury Panto

Brad Fitt and crew bring our favourite pantomime to Theatre Severn every year - it's one of the best in the country.

CHECK OUT THESE EVENTS WEBSITES:

Original Shrewsbury :
originalshrewsbury.co.uk
@originalshrewsbury

My Shrewsbury Magazine:
myshrewsbury.co.uk
@MyShrewsbury

Visit Shropshire:
visitshropshire.co.uk
@VisitShrop

ROAM

SHREWSBURY IS THE GATEWAY TO EXPLORING SHROPSHIRE AND ITS MANY ATTRACTIONS. FROM HERE, YOU CAN VISIT TWO WORLD HERITAGE SITES, WROXETER ROMAN CITY, OR ROAM OUR BEAUTIFUL SHROPSHIRE HILLS.



Severn Valley Railway



The Mere - Ellesmere



Attingham Park

WORLD HERITAGE SITES

Ironbridge Gorge, home of the Industrial Revolution and the world's first iron bridge, boasts ten different museums spread along the valley of the River Severn. Pontcysyllte Aqueduct and Canal is the longest (307m) and highest (38m) aqueduct in Britain, built in 1805 by Thomas Telford and William Jessop. Chirk Aqueduct is also part of the Llangollen Canal World Heritage site - cross it by boat, bike or paddle, and you can white water raft at Llangollen.

WROXETER ROMAN CITY

Viriconium was the fourth largest city in Roman Britain. The excavation of the second century baths began in 1859, making it one of the first archaeological sites to open to the public in the UK.

ELLESMERE LAKES

Shropshire's Lake District makes for a grand day out with wildfowl, gardens, picnic areas, rowing boats, playground, visitor centre and woodland walks.

HOMES & GARDENS

Attingham Park has beautiful walks through a scenic deer park, and a great playpark and cafe and you can book a tour of the 18th-century mansion, built by the first Lord Berwick in 1785. Boscobel House and the Royal Oak at Brewood, near Telford, has a Victorian Farmyard, play area and trail and lovely tearoom. Hawkstone Park & Follies, just north of Shrewsbury, is a fantasy land of cliffs, crags, caves and monuments built over 200 years ago. Weston Park House & Gardens at Shifnal is set in 1,000 acres of Capability Brown landscaped parkland.

ABBEYS

Buildwas Abbey is a Cistercian abbey retaining a 12th century church and beautiful vaulted tile-floored chapterhouse, whilst Haughmond Abbey boasts extensive remains of an Augustinian Abbey and is spectacular for picnics!

CASTLES

The red sandstone Shrewsbury Castle was built to dominate the town with roots dating back to William

the Conqueror (1067-ish). Acton Burnell Castle is tucked away in a quiet part of Shropshire. Parliaments were held here in 1283 and 1285. Another lovely ruin is Moreton Corbet Castle, begun in 1200 and significantly remodelled by the Corbet family in the 16th century. Whittington Castle is a picturesque Norman moated castle. The 13th century Stokesay Castle is a must-see and Ludlow Castle is a fine stone castle overlooking the River Teme.

SHROPSHIRE HILLS

An Area of Outstanding Natural Beauty which includes: the Long Mynd, Haughmond Hill, Stiperstones, Wenlock Edge and Carding Mill Valley, all with breathtaking views. The National Trust allows swimming in the reservoir at Carding Mill too, or enjoy picnics and paddling along the stream.

RAILWAYS

Journey through beautiful Mid Wales countryside on the Welshpool & Llanfair Light Railway. Or hop on the Severn Valley Railway from Bridgnorth to Kidderminster.



Haughmond Hill



Ludlow Castle

BRITISH
IRONWORK CENTRE

TEL: 01691 610952 Oswestry, Shropshire, SY11 4JH
www.britishironworkcentre.co.uk

SHROPSHIRE'S
BEST
ATTRACTION
FREE FOR KIDS



The Lion and Pheasant



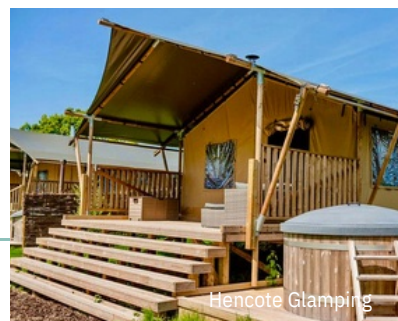
Love 2 Stay



Oxon Hall Touring Park

STAY

THERE'S TOO MUCH TO DO IN SHREWSBURY IN A DAY. TREAT YOURSELF TO A MINI BREAK AND STAY OVERNIGHT. WE'VE GOT YOU COVERED!



Hencote Glamping



Darwins Townhouse



Drapers Hall

HOTELS, INNS & GUEST HOUSES

Darwin's Townhouse is a large boutique bed and breakfast in a Georgian townhouse just off Wyle Cop. For historical interest, visit Prince Rupert Hotel on Butcher Row, in the heart of mediaeval Shrewsbury or Drapers Hall on St Mary's Place. Hambrook House in Kingsland offers smart stays in a beautiful Victorian house, whilst The Loopy Shrew has rooms right in the centre. For Scandi chic, try the Lion and Pheasant on Wyle Cop. Historic Albright Hussey Manor Hotel in Bomere Heath, is mentioned in the Domesday Book!

TOURING

Try Oxon Hall Touring Park, a scenic caravan site open all year round on Welshpool Road. Love 2 Stay is a glamping and touring park at Emstrey Bank with facilities including a natural swimming pool, assault course and lake.

GLAMPING

Riverside Cabins is an award-winning boutique cabin pods & lodges site with hot tubs and paddleboarding near Ruyton XI Town. Love 2 Stay and Hencote, at Cross Hill, have luxury lodges and glamping. Or try the Feather Down short break at Upper Shadymoor Farm, near Dorrington, or The

Shepherd's Loft near Acton Burnell.

CAMPING

Vessons Camping has private, well-spaced pitches near Pontesbury, or Brook House Farm at Crew Green offers glamping and camping on the River Severn with cafe, river fishing and fire pits. Ebury Hill is a Camping and Caravanning Club site at Haughton, near Uffington, just outside of town.

For more information contact the Shrewsbury Visitor Information Centre on (01743) 258888.

The best holidays start here!

Make your holiday in Shrewsbury unforgettable. Set amidst the glorious Shropshire countryside, and our resort offers touring pitches and glamping.

www.love2stay.co.uk
Tel: 01743 583 124



LOVE 2 STAY

Emstrey Shrewsbury
Shropshire SY5 6QS

Advertisers

Shrewsbury Map & Guide

Bars, Pubs, Cafes & Restaurants

Henry Tudor Inn - G6
henrytudorinn.com

Rhubarb at Drapers Hall - G5
drapershallshrewsbury.co.uk

CSons - F6
cons-shrewsbury.co.uk

Ginger & CO Coffee - F6

Côte Brasserie - E5
cote.co.uk

The Lion and Pheasant - H7
lionandpheasant.co.uk

The Boat House - A4
boathouseshrewsbury.co.uk

Coleham Tap - H9
colehamtapshrewsbury.co.uk

Iron and Fire Coffee - G2
ironandfire.co.uk

Gin Different - E5
theshrewsburygin.co.uk

The Nags Head - G6

Orchard Cafe - E7
orchardshrew.co.uk

The Gallery Tearoom - F6

The Loggerheads - G5
loggerheadsshrewsbury.co.uk

La Lanterna - G5
la-lanterna.co.uk

The ALB - F2
thealb.co.uk

The Loopy Shrew - D5
loopyshrew.com

Pont Bakery - H6
pontbakery.com

Retail

Aroma Tea & Coffee - G4
aroma-coffee.co.uk

Soden Collection Gallery - G6
sodencollection.com

Write Here - F5
writeherekitenow.co.uk

Illuminate Book Shop - G7
illuminatebooks.org.uk

Tanners Wines - G6
tanners-wines.co.uk

Number Eight - G5
number8shrewsbury.co.uk

Thomas Glover Jewellery - G5
thomas-glover.com

Majors - E5
majorsonline.co.uk

The Garden Room - F6
thegardenroomshop.co.uk

Carvell on the Square - E5
Carvell Lingerie - F5
carvellonthesquare.co.uk

The Darwin Centre - F4
shrewsbury-shopping.co.uk

Shrewsbury Market Hall - E5
shrewsburymarkethall.co.uk

Visual Art Network - F4
visualartnetwork.org.uk

Accommodation

The Prince Rupert - F5
princerupertohotel.co.uk

Darwins Townhouse - H7
darwinstownhouse.co.uk

Love2Stay
love2stay.co.uk

Oxon Touring Park
morris-leisure.co.uk

Attractions

Sabrina Boat Tours - D3
sabinaboat.co.uk

British Ironworks Centre
britishironworkscentre.co.uk

St Chad's Church - C6
stchadschurchshrewsbury.co.uk

St Alkmund's Church - F5
stalkmundschurch.co.uk

Haughmond Hill
forestryengland.co.uk/
haughmond-hill

Shrewsbury Cathedral - E7
shrewsburycathedral.co.uk

Shrewsbury Folk Festival
shrewsburyfolkfestival.co.uk



Shrewsbury Flower Show
Fireworks & Sabrina Boat

Enjoy the best of both worlds...



 OXON HALL TOURING
& HOLIDAY HOME PARK



Tel: 01743 340868
morris-leisure.co.uk



Touring pitches and static holiday homes within an attractive countryside setting, close to Shrewsbury Town Centre



Every effort is taken to ensure that the information in this publication is accurate at the time of going to print. All information contained in advertisements is provided by the advertisers. Shrewsbury Tourism recommends that visitors check with individual establishments before bookings or visits are made.

Published by Alexis Hill Media on behalf of Shrewsbury Tourism with assistance from Shrewsbury Town Council, Shrewsbury Business Improvement District and Shropshire Council. Copyright 2024. All rights reserved.

Alexis Hill Media would like to thank all those who generously shared images for use within this guide.

Photography: Shrewsbury BID; Visit Shropshire, Sabrina Tours Ltd,

Shrewsbury Folk Festival, Andy Hughes, Forestry England, Tanners

Wines, Alexis Hill.



Design & Production, Alexis Hill Media
alexis@alexishillmedia.com
Printing by Welshpool Printing Group
www.wpg-group.com

